

Location of Sewer Connection Sanitary Sewer Rehabilitation



Public Works Engineering 99 E. Broadway, Suite 400 Eugene, Oregon 97401 (541) 682-5291 (541) 682-8410 Fax

Property Information

Address 2001, 2011 Minnesota

Building Type SFD [] Duplex [X] Multi-Family [] Commercial [] Industrial []

Public Sewer Information

Contractor City of Eugene

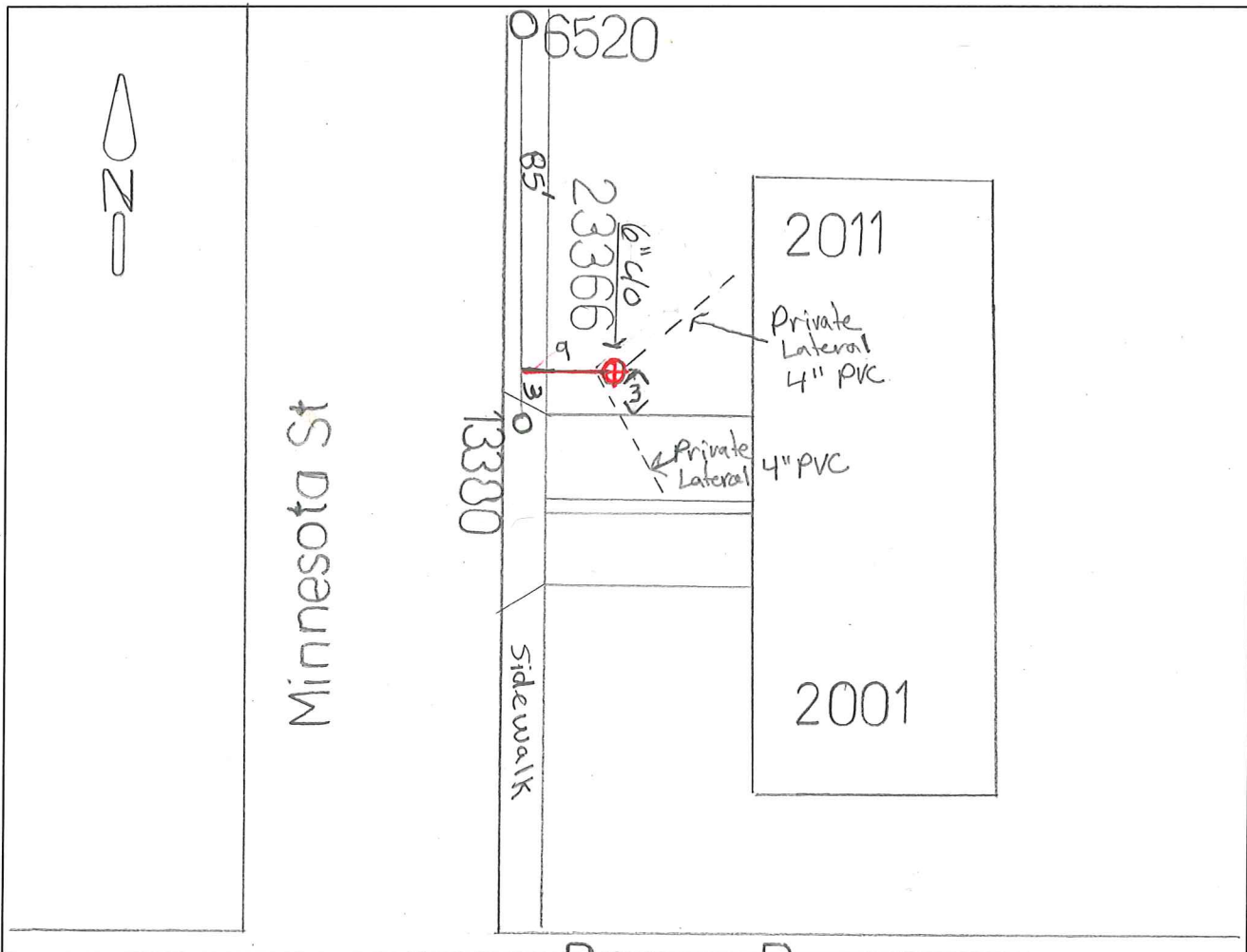
Type of Exist. Svc. 6" CCP 4" ABS Svc. Line Material Installed 3034 Pipe Dia. 6" + 4"

Actual Svc. Length Installed

Main Liner Size and Material 8" CCP SDR Tap Type

Installation Date 7/8/21 Inspected By Kelly Wilder

Segment No. 13380 Upstream 6520 Downstream Project No. Contract No.



Barger Dr